



The Missouri River: Catalyst for Learning Information Packet



This packet contains the following information:

Summary of the Workshop

Schedule for the Workshop

What to Expect

Hotel Frederick: Lodging and Dining

Packing List

Driving Directions

Travel Information

General Policies

Summary



Dates: June 13-16, 2016 – 4 days and 3 nights

Educators: Teaching grades 6th – 12th

Location: Hotel Frederick – Boonville, Missouri

Tuition: \$500 per participant

Connect with the natural and cultural history of the Missouri River through adventure and investigation. Discover the river ecosystems and the natural forces that shaped it. Understand how human choices have affected the river's rhythm and flow. Knowledgeable and experienced instructors will show you how to use river education to integrate science, social studies, English language arts and math in a way that engages students, strengthens their learning and prepares them to be college-ready and career-ready.

Registration Process

1. If you are applying for financial aid, please refer to the "Financial Aid" section below. You will need to complete this process before registering. Financial Aid recipients will receive a separate registration link when they are awarded financial aid.
2. If you are not applying for financial aid, please complete the online enrollment process [here](#) or by calling 573.443.0292. Please have your payment information ready when enrolling.
3. After completing the enrollment/payment process, download a pdf of the registration packet; fill it out and mail to P.O. Box 463, Columbia, MO 65205 or e-mail to kristen@riverrelief.org. The packet contains the following forms: (a) medical form, (b) general risk release form, (c) and travel form.

Financial Aid

Financial aid is available to qualified participants. To apply for financial aid, download a pdf of the financial aid application; fill it in and mail to P.O. Box 463, Columbia, MO or e-mail to kristen@riverrelief.org.

We will begin awarding financial aid at the beginning of April and then continue making awards on a rolling basis until all available funds are awarded. We are typically able to notify financial aid applicants of the amount we are able to award within a month of receiving an application. The applicant will then be given a deadline and separate link to register for the course; do NOT register before you are notified of your award.

Schedule

Arrive to Hotel Frederick: Monday, June 13th between 1:00pm- 1:30pm

MONDAY, JUNE 13TH

Connecting to the Missouri River

How do I explore my connection to the Missouri River?

TUESDAY, JUNE 14TH

Behind the Scenes of the Missouri River

What components make up the Missouri River ecosystem?

WEDNESDAY, JUNE 15TH

Forces that Shape the Missouri River

What is the relationship between the Missouri River and humans?

THURSDAY, JUNE 16TH

Connecting Others to the Missouri River

How do we deepen a sense of responsibility to the care of the Missouri River?



Depart from Hotel Frederick: Thursday, June 16th, between 3:30-4:00pm

What to Expect

To help you be prepared for the activities in which you and other educators will participate, please plan for active learning. For the most satisfying experience, please note that this program requires the following:

- Early morning starts are common! Be prepared to rise and shine early in the morning.
- Be a team member! We operate in teams and expect everyone to participate.
- We are place-based and experience-oriented! Our indoor classroom time will be spent exploring through discussions, activities and lectures, covering a wide variety of topics.
- We are outdoors most of the time! Our outdoor classroom time will be spent investigating many areas of the Missouri River in vehicles, on boats and on foot, so plan accordingly.

Hotel Frederick: Lodging and Dinning

Tucked away in the Missouri River Valley, is the community of Boonville, Missouri. During your participation in workshop you will be mostly spending your time exploring the Missouri River, while staying at the historic Hotel Frederick. The Hotel Frederick boasts the warmth of a Missouri bed-and-breakfast with the sophistication of a boutique luxury hotel.

History of Hotel Frederick

The Hotel Frederick is a significant local and state historical landmark, and is the best example of Romanesque Revival architecture in the region. It was built in 1905 by Charles A. Sombart, a local miller and banker. This gorgeous hotel was constructed by W.J. Cochran and Sons Construction Company for a cost of \$40,000. From its construction until 1964 the Hotel Frederick was leased by the Million family, with the Sombart family retaining ownership. In 1964 the Sombarts sold the hotel to the first of a succession of owners.

For a while the Hotel Frederick operated as a weekend restaurant and later served as the Boonville Retirement Center. The retirement center closed in 1994 and the building sat dormant until 2004, when it was purchased by the Haw family, undergoing a \$4 million restoration, bringing it back once again to its former splendor. The public areas of the Hotel Frederick have been furnished and decorated primarily with 19th century antiques, with an emphasis on region.



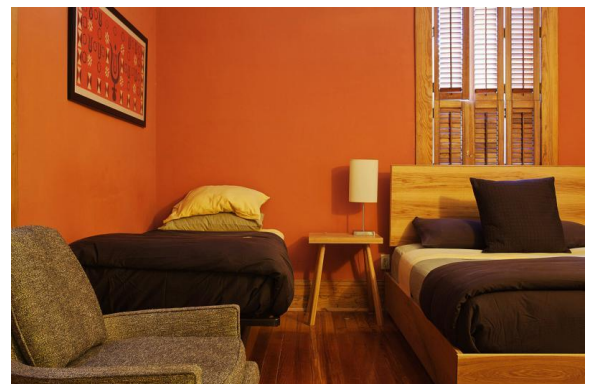
Accommodations

During your participation in the workshop, you will share a room with another same sex educator. Each suite has its own charm and personality, and no room is the same, beds in each room will range from a king bed with a day bed, a queen bed with a twin bed or day bed. In addition, each room includes a flat-screen TV, high-speed Internet access, luxury lines and robes, bath products, a sitting area, an etched glass bathroom door with a curtain, and a rain shower.



Dining

You will enjoy a taste of Boonville, Missouri as we explore the delicious, healthy meals in and around the area. Hotel Frederick will provide breakfast, while lunches will be eaten in the field. Participants will pack their lunches at Hotel Frederick immediately following breakfast. Dinner will take place at a variety of local places including a cookout at the park. We will have snacks available throughout the day and we are happy to accommodate special needs.



Packing List

Our activities and classes are taught outdoors, in *all* weather conditions. After a day in the outdoors, you may wish to have casual clothes and comfortable shoes to change into for dinners.

Foot Items

- Hiking Boots or Rubber Boots
- Tennis Shoes
- Sandals
- Socks, 3 pairs
- Cotton Athletic Socks, 2 pairs

Clothing

- T-shirts, 3-6
- Long-sleeved Shirt, 1
- Lightweight Jacket
- Jeans or Work Pants, 2 pairs
- Shorts, 2 pairs

Optional Items

- Swim Suit
- Binoculars
- Raincoat
- Water-proof bag
- Camera

Other Required Items

- Small backpack (to fit water bottles/lunch)
- Toiletries: soap, shampoo, toothbrush, toothpaste, feminine supplies etc.
- Sunblock rated SPF 30+
- Bug Repellent
- Lip Balm
- Headlamp
- Sunglasses
- Writing utensils and journal/notebook
- (2) 1-quart water bottles
- Brimmed hat
- Plastic lunch container

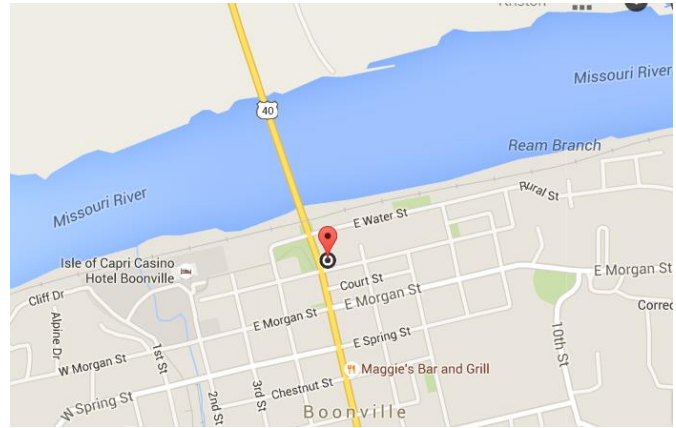
Equipment Details

Hiking Boots: You will be spending many hours in your boots, sometimes hiking along muddy river banks. Please make sure your boots are comfortable and broken-in before you arrive. Sturdy, comfortable, quality boots that are well broken in are essential.

Shoes: Your tennis shoes will get wet and maybe even muddy, so please consider bringing a comfy pair of shoes (that you don't necessarily care about) for those times when hiking boots are not necessary. Also bring a light pair of sandals to wear indoors and at the hotel, we will be depending on healthy feet for nearly all activities, so it is important to protect your feet.

Driving Directions

Hotel Frederick: 501 High St, Boonville, Missouri 65233



Traveling from Omaha, NE

Time: 4 hrs, 20 mins.

- Get on I-480 S. Follow I-29 S, I-435 E and I-70 E to MO-5 N/US-40 E/W Ashley Rd in Boonville. Take exit 101 from I-70 E. Follow MO-5 N/US-40 E to High St

Traveling from Kanas City, MO

Time: 1hr. 45 mins

- Get on I-70 E from E 12th St, Follow I-70 E to MO-5 N/US-40 E/W Ashley Rd in Boonville. Take exit 101 from I-70 E. Follow MO-5 N/US-40 E to High St

Traveling from St. Louis, MO

Time: 1 hr. 20 mins.

- Get on I-44 from N 11th St and Cole St. Follow I-70 W to MO-87 N in Boonville Township. Take exit 106 from I-70 W. Follow MO-87 N to High St in Boonville

Travel Information

Personal Vehicle

- Arriving: Please arrive on Monday, June 13th between 1:00pm-1:30pm.
- Departing: The workshop will end on Thursday, June 16th between 3:30-4:00pm

Bus: Traveling by bus is an option; if purchasing bus tickets please select Columbia, Missouri Greyhound Station as your destination and departure when purchasing tickets to and from the workshop. We will provide a shuttle from Columbia, Missouri to our location in Boonville, Missouri. For purchasing a bus ticket, visit: <https://www.greyhound.com/>

Airplane: Traveling by airplane is an option for; if purchasing airplane tickets please select Columbia Regional Airport as your destination and departure when purchasing tickets to and from the Missouri River Academy. We will provide a shuttle from Columbia, Missouri to our location in Boonville, Missouri. For more information about Columbia Regional Airport, visit: <http://www.flycou.com/>

Once a flight has been purchased, please e-mail your flight itinerary to kristen@riverrelief.org before May 30th with your travel form in the registration packet.

General Policies

Waitlist

Should the workshop reach its capacity, a waitlist will be created. The first person on the waitlist will be notified if a vacancy occurs. If this person does not accept, then we will move down the list.

Cancellation

If you should need to cancel, a refund will not be issued up to 30 days prior to the start date of the academy. Although we make every effort to adhere to our schedule, extenuating circumstance may cause Missouri River Relief to cancel a program, in which case a full refund will be issued.